



State of Israel
Ministry of Industry, Trade and Labor

Developing Quality Standards for Family Day Care providers in Israel

Tamar Almog – Director / Pnina Tapiro – Regional Director

IFDCO
International Conference
July 2009
Ireland

Outline:

1 - Childcare Department In Israel

2 - FDC system in Israel

3 - Quality standard for FDC in the Bedouin Sector

4 - AJEEC: Arab-Jewish center

5 - The Arab Bedouin Community in the “Negev”

6 - “Parents as Partners” Project

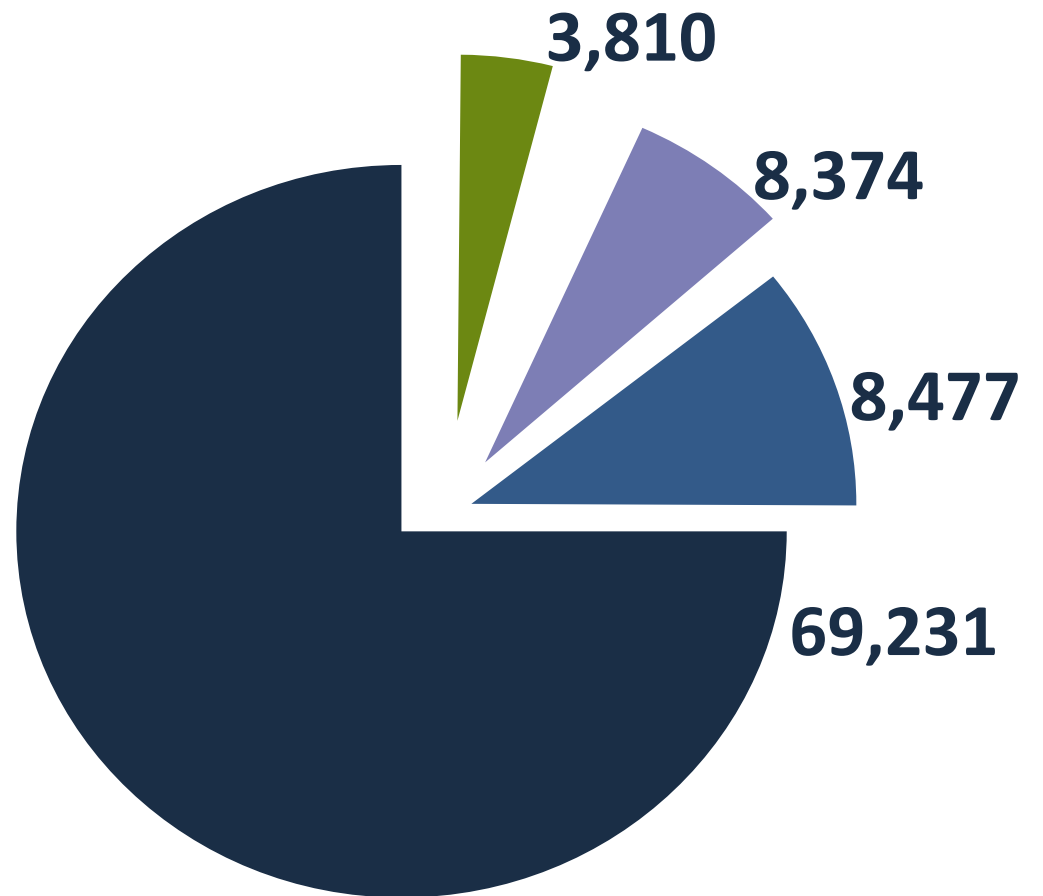
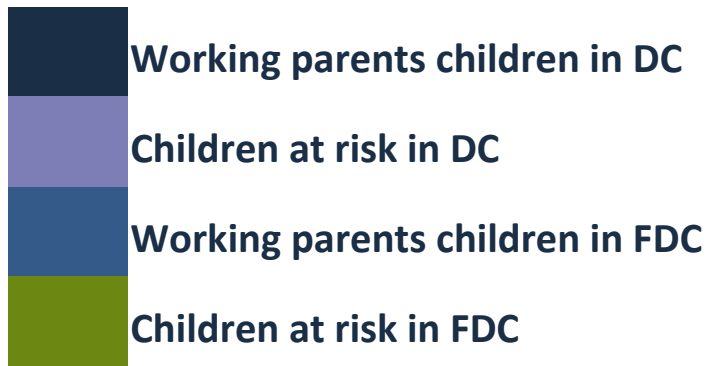
1

Childcare Department In Israel

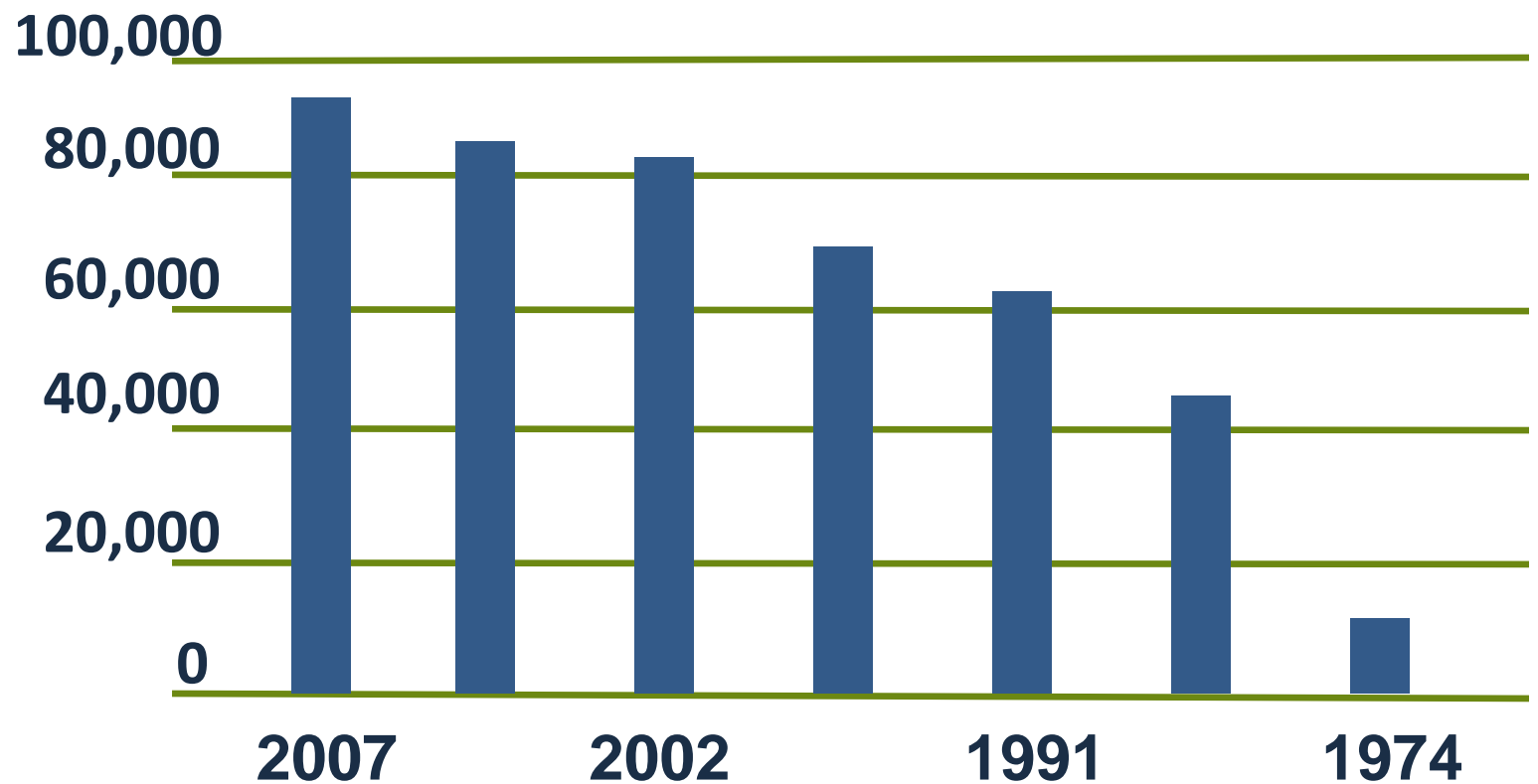
Goals of the department:

The day care centers and FDC units for early childhood department, works to **remove barriers** and to provide solutions for childcare within the framework of care and education for early childhood, in order to encourage the **integration of women** into the employment market and in professional training.

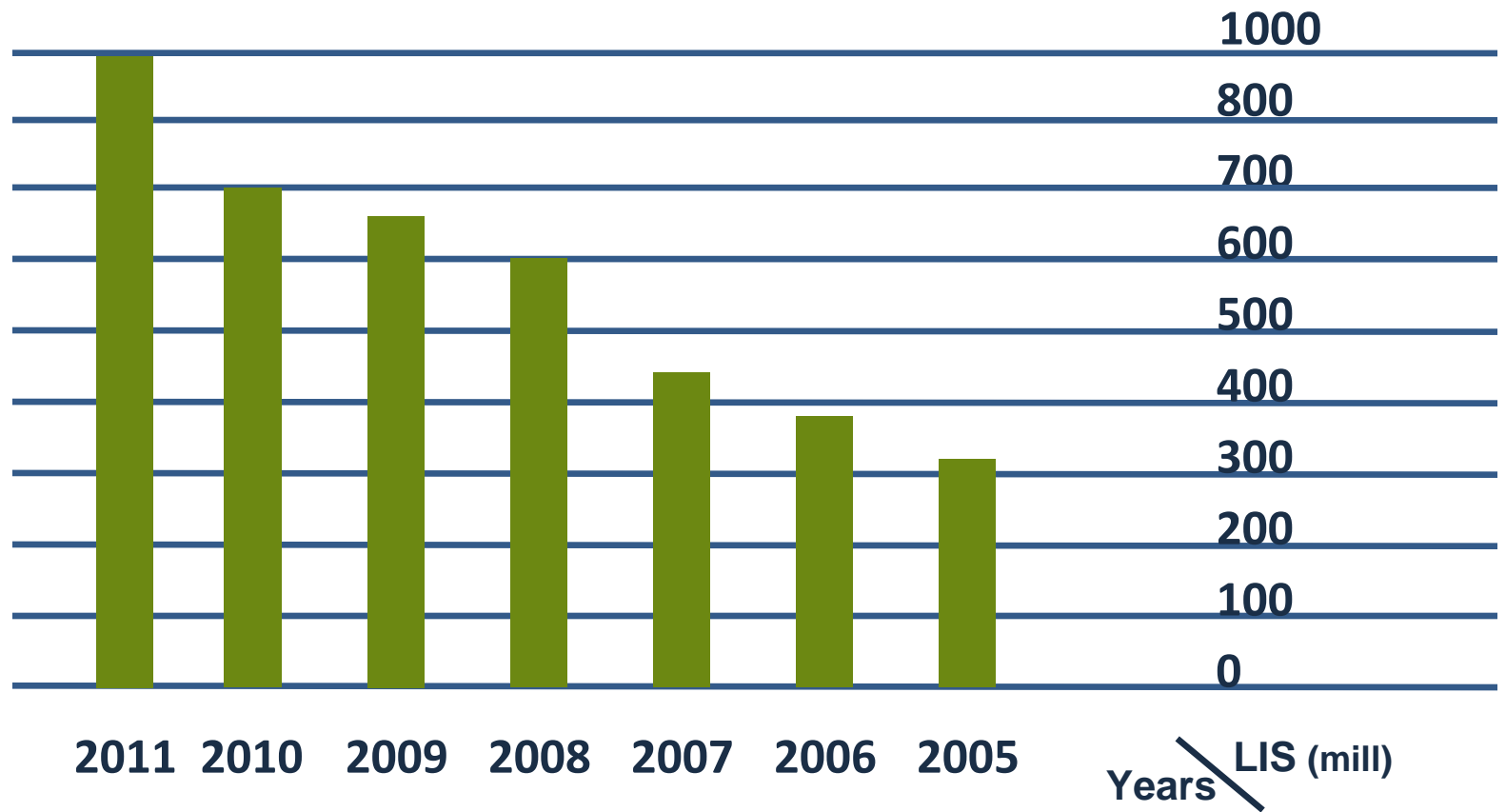
Distribution of DC and FDC



Number of children over the years



Department Budget over the years



2

FDC (“Mishpahtonim”) system in Israel
Quality standard for FDC

Organizational structure of the FDC System

Guide line

- 800 Hours Training
- Intergrading Supervision
- Safety Specification
- Education & qualification

Organizational structure of the FDC System

Partners

- Ministry of Industry, Trade and Labor
- Ministry of Social Affairs and Social Services
- Ministry of Health
- JDC (American Jewish Joint distribution Committee)
- Private Foundations

3

Quality standard for FDC in the Bedouin sector

With a Communal - Educational Orientation

Vision

Developing an informal system
which will educate and nurture the needs
of children in the Bedouin Community
taking into account their cultural
living conditions

Outcomes

- Optimal development of the children;
- Helping to strengthen the mothers as educators;
- Training mothers as child cares and as role models for other mothers;

Outcomes

- Developing new educational tools that will be attuned to the Bedouin culture;
- Developing new educational settings to answer the needs of children Between the ages of one to three;

Outcomes

- Strengthening the status of woman by helping to develop new work places for women;

4



AJEEC: Arab-Jewish center for Equality,
Empowerment and Cooperation

Mission Statement

AJEEC's work, with Arab and Jewish populations, is based on the following:

1. Equality

Equality must be achieved in all spheres of life, in real rather than merely formal terms. This includes the economy, education, health and housing as well as inclusion in the centers of political, institutional power.

2. Empowerment

Empowerment – economic, social and political – of the Palestinian-Israelis, so they can attain true equality.

3. Cooperation

Cooperation between Arabs and Jews, based on equality and empowerment of the Arab minority, is the basis for the development of Israel's democracy and for the advance of both communities.

5

The Arab Bedouin Community in the Negev

The Arab Bedouin Community in the Negev



The Arab Bedouin Community in the Negev

- **170,000 Arab Bedouins live in the Negev.**
- **85,000 in 8 towns.**
- **85,000 in 45 villages lacking basic provisions such as roads, sewage systems, electricity and water.**
- **This community is the poorest sector in Israeli society, with high unemployment, limited means of livelihood, high illiteracy and crime rates.**
- **One result is a syndrome of dependency and a 'culture of poverty'.**

In the Villages



Arab Bedouin Children



Arab Bedouin Children

- Average family size: 8-10 persons
- Infant mortality: twice as high as that of the Jewish population
- 54% of population under age 18
- 80% of children hospitalized in Beer Sheva are Bedouin Arabs
- Limited number of early childhood (0-3) educational frameworks
- 40% of Bed' children drop out of school before completing high school



The Arab Bedouin Mother



The Arab Bedouin Mother

- The transition from the traditional Bedouin way of life has disempowered women.
- Once superbly competent to raise her children – she lacks the know-how to prepare them for life in modern urban society.
- Conservative societal traditions constrain women's development.
- 70% of women over 35 are illiterate

6

“Parents as Partners”

Community-Based Early Childhood Education and Development Program for Negev Arab Bedouin Children and Parents



“Parents as Partners”



“Parents as Partners”

OUR GUIDELINES:

- Parents are the child’s first and most important educators
- The key to optimal development is involved, active and knowledgeable parents
- Respectful, ‘eye-level’ peer -guidance for parents
- Integration of traditional with modern child-rearing practices
- Development of culturally appropriate educational frameworks, materials and curricula.

“Parents as Partners”

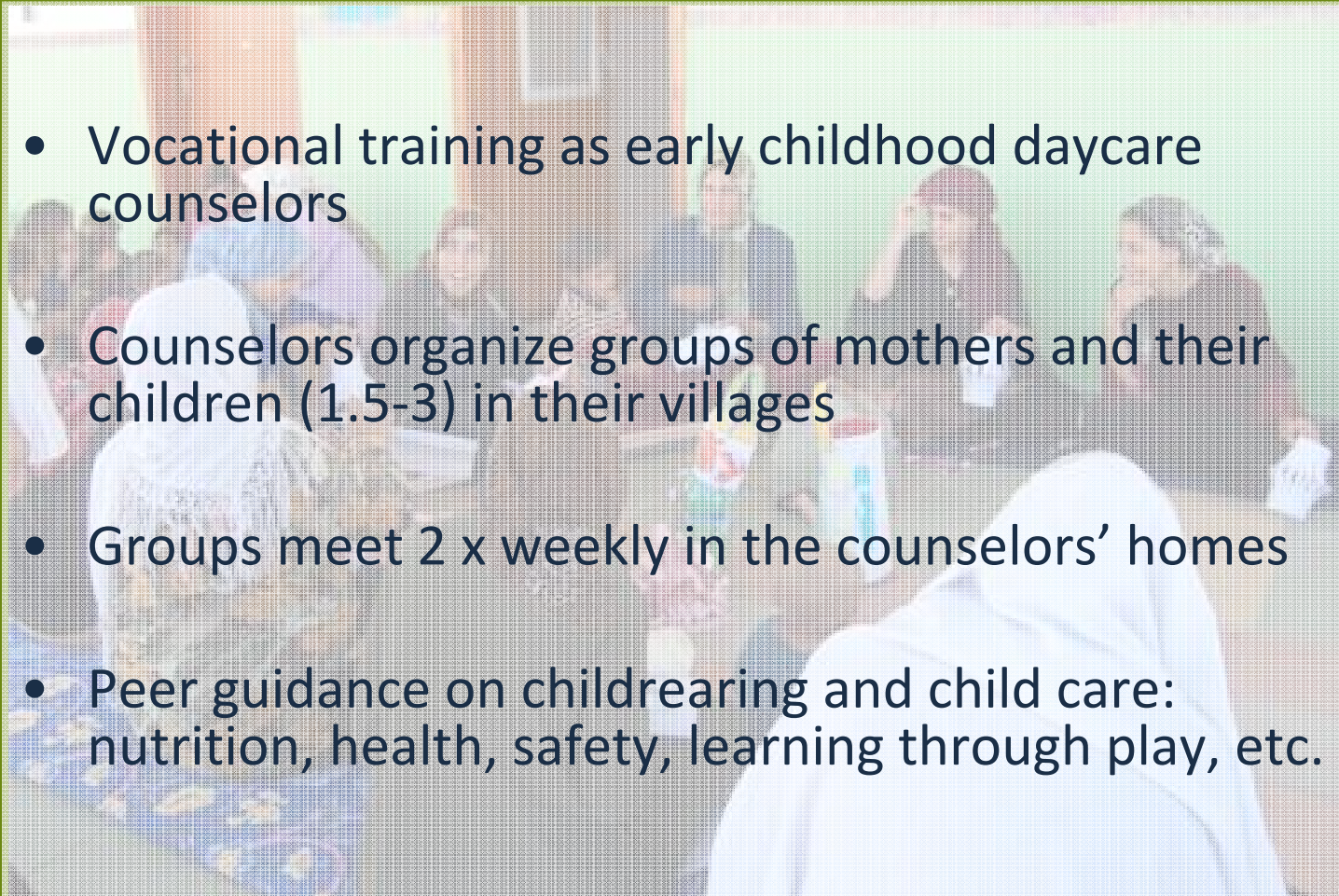
Year I: Mothers and Children’s groups



“Parents as Partners”

Year I: Mothers and Children’s groups

- Vocational training as early childhood daycare counselors
- Counselors organize groups of mothers and their children (1.5-3) in their villages
- Groups meet 2 x weekly in the counselors’ homes
- Peer guidance on childrearing and child care: nutrition, health, safety, learning through play, etc.



“Parents as Partners”

Year II: Bet El Umm Wal Tifil
The house of the Mother and the Child



“Parents as Partners”

Year II: Bet El Umm Wal Tifil

The house of the Mother and the Child

- The frameworks are designed as an extension of the home environment
- 15 children aged 1 ½ to 3 in each framework
- 5 mornings weekly from 8 -12
- 2 counselors and one mother on daily rotation
- Emphasis on traditional cultural elements, combined with modern developmental games
- Regular in-service training for counselors and mothers

“Parents as Partners”



Project Accomplishments



Project Accomplishments

- 21 early childhood educational frameworks
- More than 300 children participate in the frameworks
- 42 women working as early childhood daycare teachers
- Partnership between government and grassroots NGO
- Integration of state-of-the-art early childhood theory and practice with cultural appropriateness and competence



“Parents as Partners”



provide

quality solutions

of care and education
for children at risk

Encourage the

integration of the Bed' omen

into the employment market and in
professional training.

It's hard but it's possible!

Thank you